

# Reptile House Scavenger Hunt

## Reptiles

Reptiles come in all shapes, sizes and colors. Put a check next to the color or pattern you find in the reptile house.

BROWN \_\_\_\_\_

GREEN \_\_\_\_\_

BLACK \_\_\_\_\_

GRAY \_\_\_\_\_

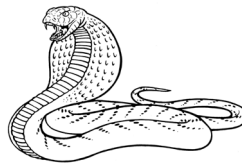
ORANGE \_\_\_\_\_

YELLOW \_\_\_\_\_

WHITE \_\_\_\_\_

*As you walk through the Reptile House, look for these animals. Put a check beside those you see.*

Burmese python \_\_\_\_\_



\_\_\_\_\_

Blue tongued skink \_\_\_\_\_

itor \_\_\_\_\_

Put a check in the box if you see the following in the reptile house.

Spines

Long tail

Stripes

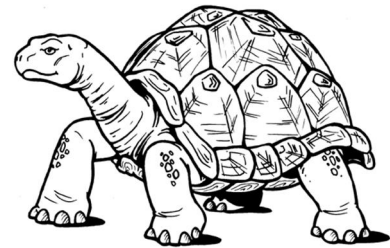
Long claws

Spots

Patterns

Animal with one color

Animal with many colors



Do you see any reptiles moving around? \_\_\_\_\_

Do you hear any reptiles right now? \_\_\_\_\_

